

Chapter W – 2 – Memphis Gold Region N

Friends for Fun, Safety, Knowledge

October 2011



Image Resized by JpegSizer from TannoTools.com



Chapter Director – Richard Hutson

901-382-2562

Richard.hutson@att.net

Assistant Chapter Director - Open

Chapter Educator – Ed Johnson

901-309-1576

erj55@att.net

Chapter Treasurer – Phyllis Davis

901-309-1576

pixiephyl@att.net

Membership Coordinator – Pat Brewington

901-603-0910

gwrrel64@yahoo.com

Chapter Webmaster - Chuck Caldwell

H: 901-854-4824

C: 901-497-6575

CECGOVOLS@HOTMAIL.COM

Newsletter Editor – Claire Greer

901-854-8702

Claire.msubully1977@gmail.com

Technical Advisor – Ron Page

901-861-2143

rkahpage@aol.com

Tennessee District Directors

Richard and Becky Griffin

Meeting Time – 3rd Saturday of each month

Eat at 6:00 PM – Meet at 7:00 PM

Perkins – 1340 S Germantown Rd.

Germantown, TN

A Note from Richard Hutson

Chapter Director

I hope everyone is enjoying the nice weather we are having. Thanks go out to the following people:

Ron, for the Bike day in his garage and Karen for preparing lunch.

Ruth, Pat, and Jim for working the M S ride. Mississippi Y had almost their entire chapter there on Saturday. I did work both days, and these riders are as serious About their bikes as we are. There were close to 500 riders, and on Saturday night, the bicycles were locked inside the Tennis Courts at Harrah's with armed guards on site. There were close to \$500,000.00 worth of bicycles inside the fence.

To all Stacy Muler sent us a Thank you card. I plan on doing this again next year.

I have been notified that the update for my GPS is in the mail and should be at my office on Monday, the 3rd of October. Those who have received theirs on the GL 1800 web site say they can see the changes.

Remember Chapter N's fun day, and let me or Glenda know if you are planning on attending.

Ride Safe

Just A Reminder 

October Meeting

October 17th

October Birthdays

October Anniversaries



The Chapter Educator

Ed Johnson

Rider Education – Braking



Brakes are one of the most important things on your motorcycle. Think about how many times you apply the brakes each time you go for a ride. Also, think about how much your safety depends on your brakes. For the most part good braking depends on two things, proper maintenance of the brake system and tires and proper application of the brakes.

Most Gold Wings have three disk brakes, one on the rear wheel and two on the front. The brake pedal you operate with your right foot controls the rear brake and the brake on the left side of the front wheel. The brake lever you operate with your right hand controls the brake on the right side of the front wheel. The reason for two front brakes is because around 75% of your braking is done by the front wheel. When you apply the brakes, your weight and the weight of the bike is shifted forward, and the front forks compress, putting more weight on the front wheel, and lessening the weight on the rear wheel. The harder you brake, the more weight shifts, and the more braking the front wheel has to do. Just think, under maximum braking that little front tire is having to stop 800 to 1000 pounds almost by itself! (a good reason to check your tires and air pressure)

A few tips to remember for good braking:

- Apply both brakes smoothly and firmly – get into the habit of using the front and rear brakes together.
- Anticipate stops so you can better maintain your balance and keep too much weight from shifting forward.
- Look straight ahead as you are stopping – remember your bike tends to go in the direction you are looking.
- When braking, try to have your bike as upright as possible, not leaning.
- Brake before entering a turn, not after you are already in the turn.
- On slow speed turns don't use the front brake.
- Above all, don't apply the brakes hard enough to lock the wheels. Maximum braking is achieved before your wheels lock up. Locking up the wheels will almost always cause you to lose control, and you won't stop any quicker.
- Suggestion: Anytime you have a tire changed, remind the person doing it to check the condition of your brake pads. If they are getting thin or don't look good, have them replaced. When in doubt, change them out.

Take care and ride safe.



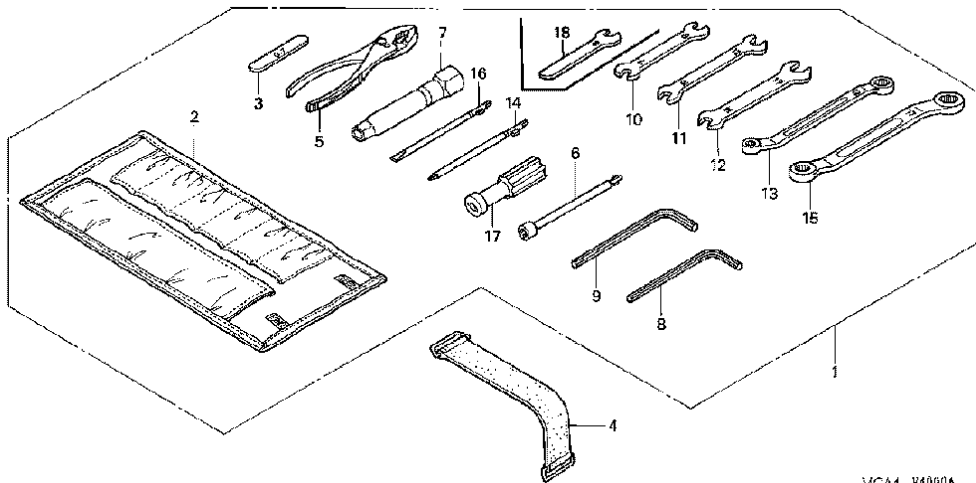
The Tool Kit you carry in your bike and what's in it “Plus – Items you may want to carry on the road or keep in your work shop”



By Ron Page
 TN-W2 Technical Advisor
 October

The GL1800 Tool Kit

The basic tool kit that comes with your GL1800 has the following tools in it and they will allow you to work on your bike. *Note: your manual states that “Some roadside repairs, minor adjustments, and parts replacement can be performed with the tools contained in the kit”.*



VCA4- P4000A

REF#	PART NAME (Part #)	#REQ
01	TOOL SET 89010-MCA-780	001
02	BAG, TOOL 89101-ME5-670	001
03	GAUGE (0.7MM) 89103-371-000	001
04	BAND (183MM) 89105-MCA-000	001
05	PLIERS (150) 89210-MN5-000	001
06	WRENCH, BOX (8MM) 89211-MR7-000	001
07	WRENCH, PLUG (16) 89216-MCA-000	001
08	WRENCH, HEX. (5MM) 89221-MJ4-000	001
09	WRENCH, HEX. (6MM) 89221-422-000	001
11	SPANNER (10X12) 89225-MN5-000	001
12	SPANNER (14X17) 89226-MN5-000	001
13	WRENCH, EYE (10X12) 89227-MN5-000	001
14	SCREWDRIVER 2 89227-422-000	001
15	WRENCH, EYE (14X17) 89228-MN5-000	001
16	SCREWDRIVER 2 89229-422-000	001
17	GRIP, SCREW DRIVER 99003-50000	001
18	SPANNER (8MM) 89224-KW9-000	001

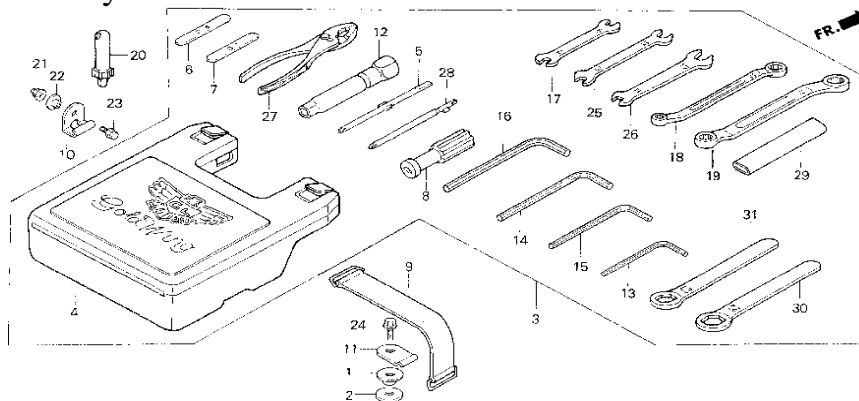
Now I would recommend adding several items to your tool kit that will prepare you for more repairs or to accomplish some routine maintenance activities on your Wing. Some of these items will enhance the tools you keep in your garage or workshop while others will make it much easier to make repairs to your Wing while you're on the road.

- Some assorted screwdrivers (flat and Phillips, long and stubby)
- Pliers (needle nose and standard)
- 8MM, 10MM, 11MM, 12MM, 13MM box end wrenches
- Hemostat (handy to hold small things)
- Multi-angle ratchet wrench
- Metric socket set (assorted sizes) – you'll also need a large socket (US size is 7/8 inch - note – need **the metric size for this socket**) to remove the axel bolt on the front tire. You'll also want extra 8MM, 9MM and 10MM sockets.
- Allen head socket set (assorted sizes)
- Ratchet wrenches plus adapters to accommodate various size sockets that you'll need while on the road (small and medium duty)
- Ratchet wrench extensions (various lengths)
- Torque adapters (to remove torque bolts – two sizes – a t26 and a t40)
- Torque wrench (for your shop)
- Wire cutters/strippers
- Wire (several sizes and lengths)
- Pig tail connectors (assorted sizes)
- Crimping tool
- Magnet retriever (to help pick up those bolts that accidently drop)
- Duct Tape
- JB Weld (new unopened packages)
- Small piece of heavy duty Velcro
- Small bottle of oil (the type and grade you primarily use in your motorcycle)
- Spare fuses (various sizes)
- Scotch Dual Lock Reclosable Fasteners
- Tire repair or patch kit (you can plug a tire in an emergency if you're prepared)
- Air Pump or small air compressor
- Air Compressor (for your shop)
- Voltmeter (for your shop)
- Motorcycle Lift (for your shop; Note: I have a Pit Bull which works great for me)
- Hand jack (for your shop – this jack is an old one from a car – might be called a scissor jack)
- Bench Vise (for your shop)
- Battery Tender (for your shop)
- Mity Vac (for your shop; used to bleed brakes and other liquids on your ride)
- Soldering iron (one for your shop and a gas (butane) powered one to carry on your bike)

- stabilize it so that the front wheel can be removed if necessary). This can be used as a workbench if you need to mix materials such as the JB Weld compounds.
- Zip ties (various sizes)
- Hammer(s) – last resort when things get stuck – not to hurt your fingers when in use (haha)

The GL1500 Tool Kit:

The basic tool kit that comes with your GL1500 has the following tools in it and they will allow you to work on your bike.



REF#	PART NAME (Part #)	#REQ
01	COLLAR 81355-MN5-000	001
02	RUBBER, BAG MOUNT 81356-MN5-000	001
03	TOOL SET 89010-MZ3-000	001
04	BOX, TOOL 89101-MN5-000	001
05	SCREWDRIVER 89102-538-000	001
06	GAUGE, FEELER (0.8) 89103-MG9-680	001
07	GAUGE (0.7MM) 89103-371-000	001
08	GRIP 89103-538-000	001
09	BAND, TOOL SETTING 89105-MN5-000	001
10	STAY, TOOL SETTING 89106-MN5-000	001
11	PLATE, TOOL SET 89108-MT2-000	001
12	WRENCH, PLUG 89216-MB0-000	001
13	WRENCH, HEX. (4MM) 89221-KW3-000	001
14	WRENCH, HEX. (6MM) 89221-371-000	001
15	WRENCH, HEX. (5MM) 89221-429-000	001
16	WRENCH, HEX. (8MM) 89222-371-000	001
17	WRENCH (7X8) 89224-MZ3-000	001
18	WRENCH, EYE (10X12) 89227-461-000	001
19	WRENCH, EYE (14X17) 89228-MR8-000	001
20	GAUGE, AIR PRESSURE 89301-MN5-003	001
21	NUT, CAP 90201-428-900	001
22	WASHER (6X20) 90512-KF9-900	001
23	BOLT, FLANGE (6X12) 96001-06012-07	001
24	BOLT, FLANGE (6X20) 96001-06020-07	001
25	SPANNER (10X12) 99001-10120	001
26	SPANNER (14X17) 99001-14170	001
27	PLIERS (150) 99002-15000	001
28	DRIVER 2 (NO.3) 99003-20000	001
29	HANDLE (12MM) 99006-12000	001
30	WRENCH, EYE (22MM) 99006-22000	001
31	WRENCH, EYE (27MM) 99006-27000	001

Just for fun – here is a picture of my 1970 Honda CB175 tool kit (please note how few tools are in it and then think about how hard it would have been to repair something while on the road).



Now being a guy, I really like to look at as well as buy tools so I have some special ones that were purchased over time just because I saw them and thought that I needed them. These were potential Christmas presents until I just had to have them. What does this mean - guys and gals if you're in the need for something to buy for your spouse for Christmas or birthday or anniversary or just because – then look for the gleam in their eye as they walk by the tool department at your local store. Note to self - This also applies to Northern Tools, all NAPA stores, Home Depot, all GWRRA rallies and any store that sells tools. What does this mean to you – Well in a future article, I'll focus on what you Gold Wingers can buy as Christmas presents for your ride whether it be a Wing (the 2012's have been available since May), another motorcycle, a Gold Wing trike or even a Stallion (note: the Stallion's engine is now being manufactured off shore so that means new 2011's will not be offered this year and we'll need to keep an eye out for them in 2012). Happy riding!

W-2 GWRRA Dates to Remember

October 4

Dinner Ride to Kooky Kanucks, downtown Memphis at 6:30 pm

October 13 – 15

Mississippi District Rally in Tupelo, MS

October 17

W-2 Meeting at Perkin's in Germantown

October 22

Linden, TN

Commodore Hotel

Meet at 7:30 am at BP on Hwy 64

October 27

Dinner Ride to Cajun Catfish Company on Sycamore Drive, 6:30 pm

October 29

Chapter N's Fun Day at Paris Landing State Park, 10 - 2

November 5

Meet at the Welcome Center on I-55, Kickstands up at 3:30, riding to Taylor's Grocery for dinner at 5 pm in Oxford, MS

November 13

Staff Meeting at Glenda's in Collierville at 3 pm

November 17

Dinner ride to Spaghetti Warehouse, downtown Memphis at 6:30 pm

November 19

W-2 Meeting at Perkins in Germantown

December 3

Christmas Party at Germantown Country Club at 6:30 pm